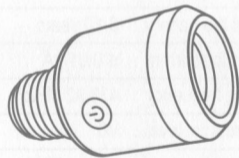


Zoiinet

Remote Control Light Socket

E27/E26 Bulb Base Holder

User Manual



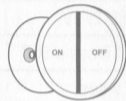
FCC ID: 2ANPS-KS-DB03

FCC ID: 2ANPS-SWVK1R01

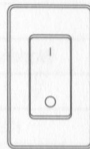
IC : 26805-SWK1

Product Appearance

1. The wireless light socket is compatible with these wireless switches:



SW-CA2



SW-AK1

* Please note: The product images are for reference only, the purchased object shall prevail. *

* The manual's data mostly originates from the company's laboratory tests.*

1

Advantages And Features



Compact size
Size: 3.35 x1.7x1.7 in



Zero crossing trigger technology extends product life
Relay life 400,000 times on/off



Equipped with 5A fuse, automatically blows when overloaded
Overload protection, improving safety and protecting the device



3000V Anti surge protection, protects against lightning strikes and power surges
3 times anti surge protection of the normal sockets, providing better protection for electrical equipment



Has low temperature rise, does not overheat during work
Much safer to use



Consumes 0.05W in standby mode, and limits operating temperature rise to $\leq 15^{\circ}\text{C}$
Extend product life sustainably while being environmentally friendly and energy-efficient

2

Installation Warnings

- The remote control light socket is for indoor use, please do not install it in a place exposed to direct sunlight, rain, long-term working temperature exceeding the limit, or high pollution and high humidity, which will shorten the service life of the remote control light socket controller.

Installation diagram:



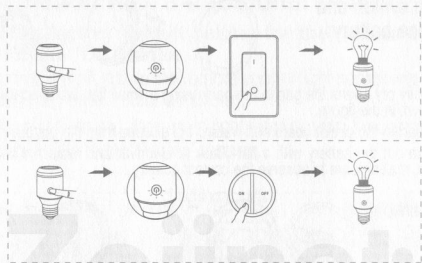
WARNING!
Please power off before installation! Caution

Screw into the socket base

Note: After installing the light socket, please pair the wireless switch and the light socket to use. For pairing instructions, please refer to **page 4**.

3

Pairing

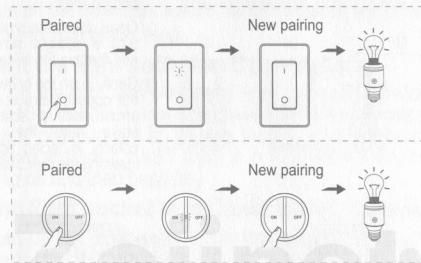


1. Screw the remote light socket into the base.
2. Power it on. By pressing and holding the setting button for 2 seconds. Release your finger when the indication light flashes to enter code matching mode.
3. Press the wireless switch panel that needs pairing. The switch can turn the light on/off once the pairing process is complete.

4

Adding a new switch to paired group

1. Add More Switches

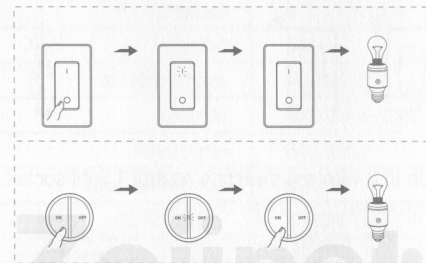


To pair the new wireless switch panel, press the paired wireless switch panel for about 16 seconds. Release your finger when the LED indicator flashes rapidly, then press the new switch. The pairing process is complete when the new switch is able to turn the light on and off.

5

2. Remove the paired switch code

(Operate with caution)

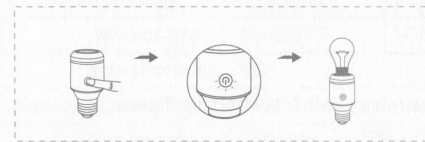


To remove the code, press and hold the paired key for about 35 seconds. Then release the key and press the panel key again to complete the operation. The LED indicator will change as follows: fast flash to off, slow flash for 8 times to off, then slow flash.

6

Remove the Paired Light Socket

(Operate with caution)

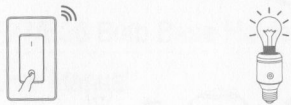


To unpair the light socket, press and hold the setting button for about 10 seconds. Release your finger when the indicator flashes changes from FAST to SLOW. Once the unpairing process is complete, the switch panel will be unable to turn the light on or off.

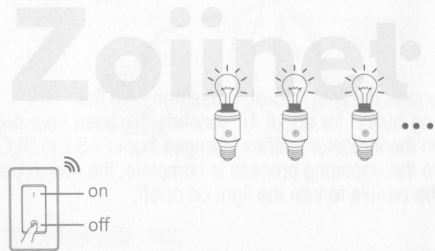
7

Application (Home, Hotel, Inn or Factory etc.)

a. 1 wireless switch controls 1 light socket.



b. 1 wireless switch controls multiple light sockets.



8

c. 2 wireless switches control 1 light socket.



d. Up to 8 wireless switches control 1 light socket.

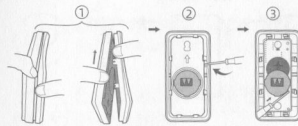


9

Switch Disassembly & Battery Replacement

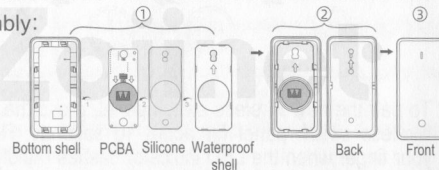
(Model: SW-AK1)

Open switch and replace battery:



- ① Separate the front shell from bottom shell.
- ② Open the waterproof cover with a straight screwdriver and remove the silicone.
- ③ Gently push the battery out in the opposite direction of the arrow with a screwdriver. Make sure the positive polarity is facing up before inserting the new battery.

Assembly:



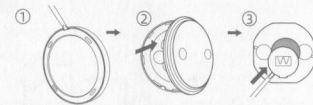
- ① Place the PCBA and silicone separately into the bottom shell (The groove in the bottom shell corresponds to the top chip of the PCBA), then press down with a waterproof shell.
- ② Refer to the diagram and insert the front shell into the just installed bottom shell. Notice that the two arrows of the front shell and the waterproof shell are in the same direction.

10

Switch Disassembly & Battery Replacement

(Model: SW-CA2)

Open switch and replace battery:



- ① Gently pry opens the gap in the back using a small flat-blade screwdriver as shown in the figure.
- ② Separate the circuit board and waterproof silicone from the bottom shell.
- ③ Push out the battery with a flat-blade screwdriver and replace it with a new one, making sure to observe the correct polarity.

Assembly:



- Tip 1:** Match the battery and magnetic suction position. Align the small holes on the left and right sides of the circuit board with the bottom shell.
- Tip 2:** Pay attention to the align groove positions of the bottom shell with the panel and buckle it.

CAUTION:

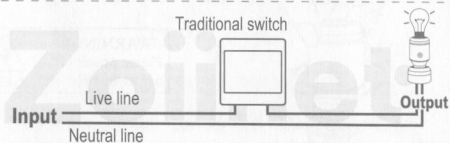
1. To avoid the risk of explosion, replace the battery strictly according to the model requirements in the user manual;
2. After replacing the battery, store it in a safe place away from children to prevent burns or accidental ingestion.

11

"Open" / "Close" state settings of the remote light socket should be used in combination with a traditional switch

Note: The factory default setting for the remote light socket is the "Off" state.

1. When power off, rotate the remote control light socket into the grounded bulb base holder as shown;
2. When power on, then pair light socket with the wireless switch according to the "Pairing" chapter.



Wiring Diagram For The Remote Light Socket And Traditional Switch



IF the light socket is in Open state:

- Turn on the traditional switch to immediately light up the lamp. And the wireless switch can be used to control the lamp.
- Turn off the traditional switch, wireless switch will no longer be able to control the lamp.

To set the light socket in Open state:

Turn off the light and press and hold the setting button for about 16 seconds. Release the button when the indicator light remains continuously lit. (During the 16s, the indicator light will change from a FAST flash to a SLOWER flash, before turning off and then back on.)

IF the light socket is in Close state:

- Turn on the traditional switch, the lamp may not light up immediately. To turn the lamp on or off, you can use the wireless switch.
- Turn off the traditional switch, the wireless switch will no longer be able to work.

To set the light socket in Close state:

Same method of setting the light socket in open state. Press and hold the setting button for about 16 seconds. Release your finger when the indicator light remains continuously lit.

Specifications of Light Socket

Model	SW-R04
Dimension	3.35 x1.7x1.7 in
Current	5A
Working voltage	AC 80-275V
Relay life	400K times on/off
Key lifespan	50K times
Incandescent lamp	≤ 800W
LED/CFL lamp	≤ 500W
Standby power consumption	≤0.05W
Working power consumption	≤0.6W
Working frequency	433 MHz
Fireproof level	V0
Working temperature	-40 - +70 ℃
Storage temperature	-40 - +80 ℃

Specifications of Wireless switch

Model: SW-AK1	Model: SW-CA2
Dimension: 4.72x2.83x0.47 (in)	Dimension: 2.36x2.36x0.51 (in)
Switch panel lifespan : 300K times	
Wireless range : 100-300 FT	
Waterproof level : IP66	
Battery model : CR2032	
Life of the battery : 6-10 years	
Standby current : ≤ 0.01 uA	
Working frequency : 433.92 MHz	
Fireproof level : V0	
Working temperature : - 40 - +70 ℃	
Working humidity : 0 - 90%	
Storage temperature : 40 - +80 ℃	